

*“It’s all about trees, deer, ..”*



And much more ... The shortest guide (ever!) to 1000 years of woodland heritage, management and development at Windsor.









Heavy clay to the north  
and west ...

Oak, Beech, Elm, Hazel,  
Willow, Scrub ...

Lighter sands and gravels to the  
south and east ....

Scots Pine, Silver Birch, scrub,  
heather, bracken - a heathland  
environment...





## Windsor Great Park ...



c.1240 ... enclosure, early management, Forest Law



## Early management style - fair maidens and pollards ...







Coppicing, too ...





Highways and byways ...









1580 - in preparation for war ...





## 1660: Restoration – and change within the landscape ...



The worlds of utility and beauty come together ...











Forest 'motorways' ...









1748

Enter the 'Grand Master' of  
the southern landscape at Windsor ...





a new age of landscaping ...



but it's all so highly irregular ...





New World Exotica ...





with a little formality here and there...



1817 –  
seeds of change



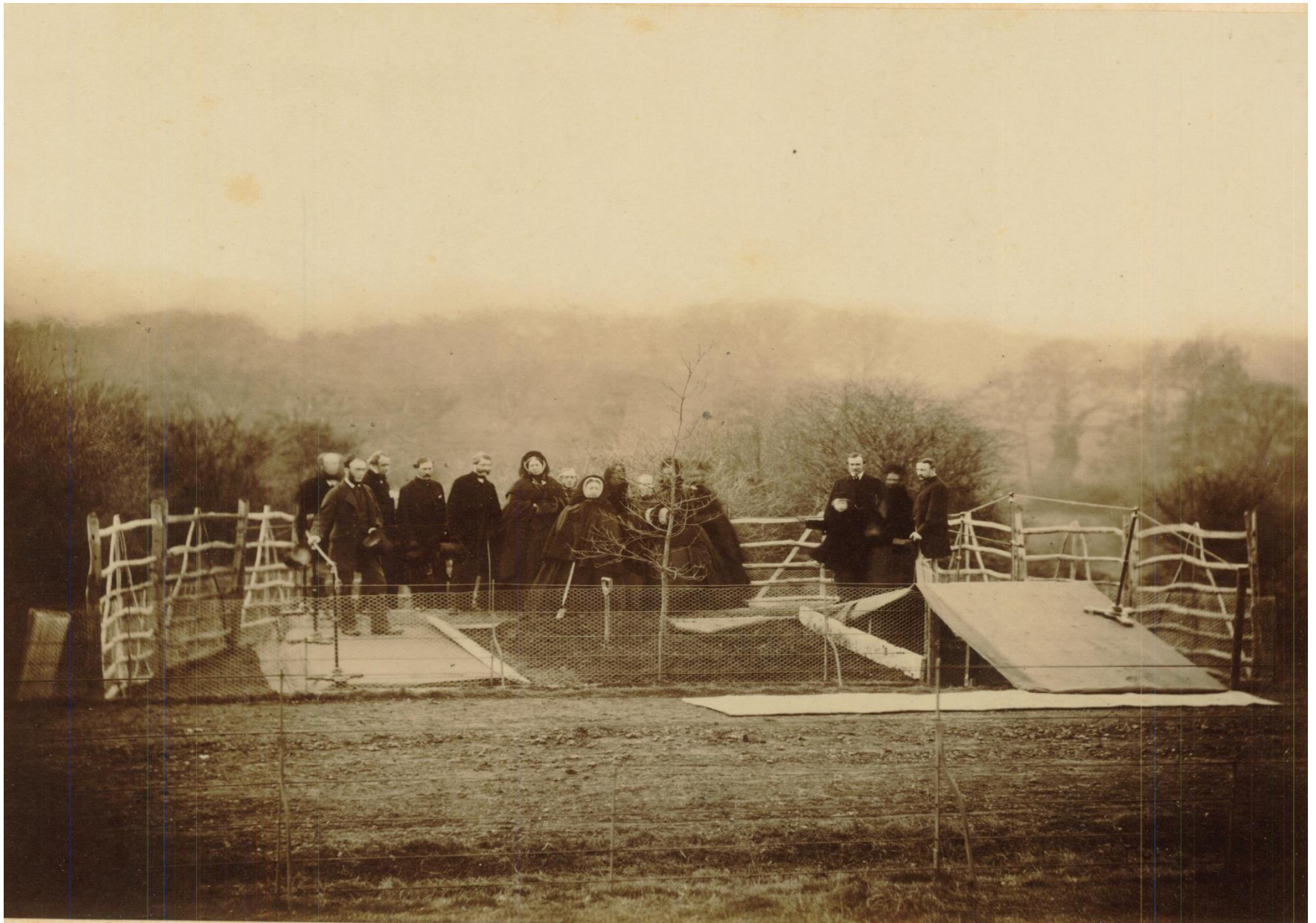




Admire the view ...



# Ceremonial trees ...









1917 - a sad harvest ...

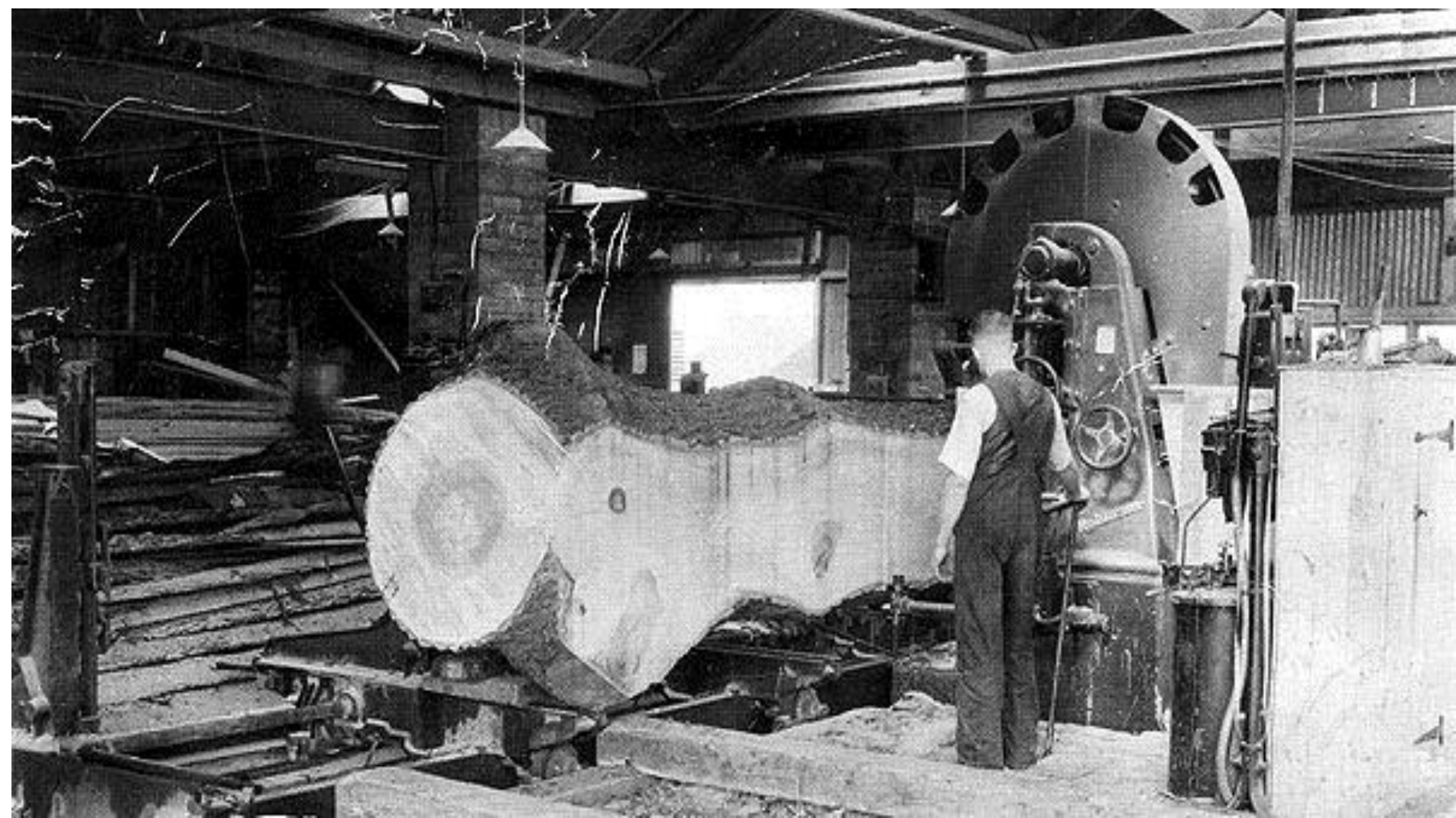




The 1930's ... commercial forestry really takes off









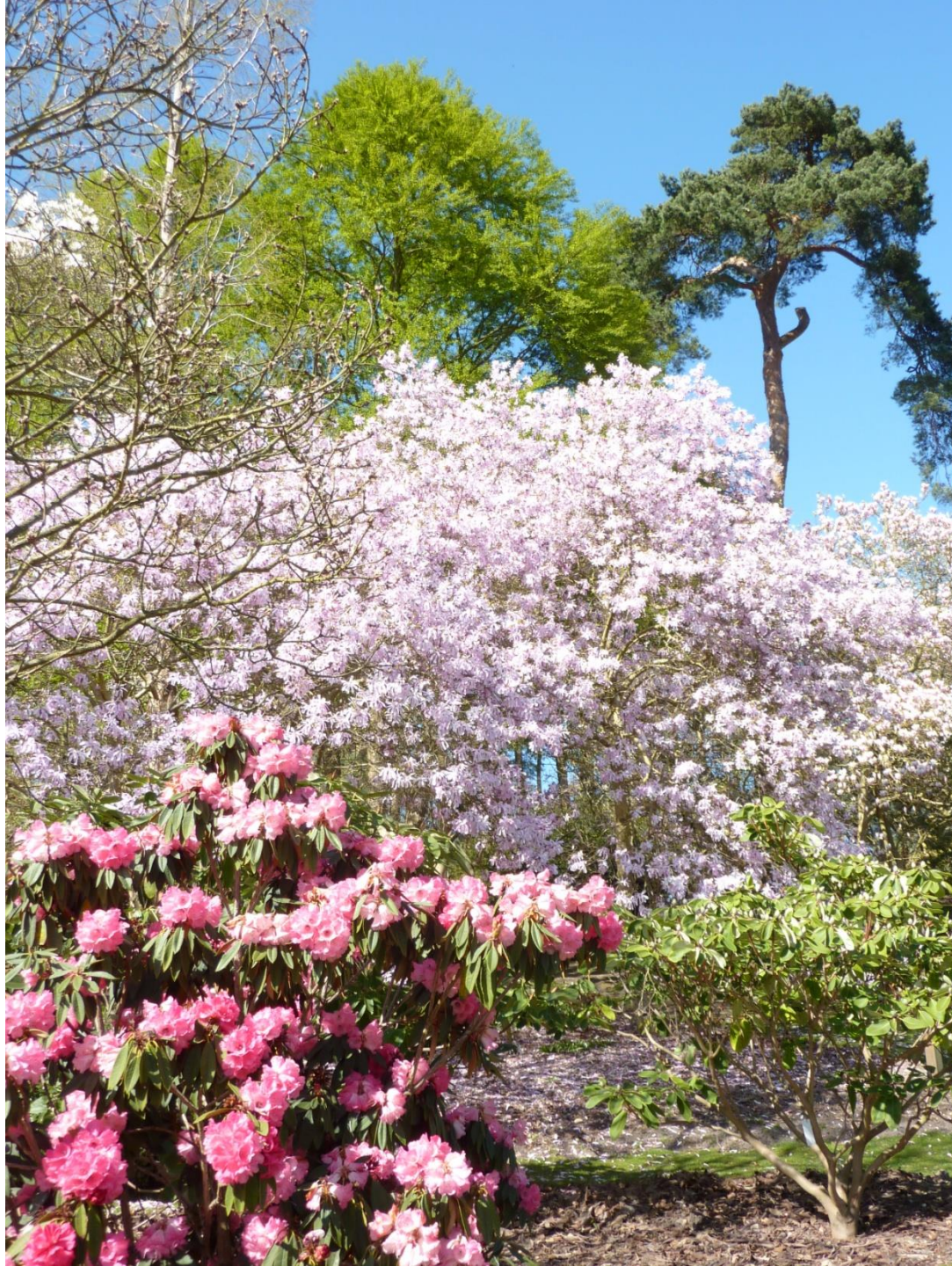
Post-war-time - pleasant diversions, too ...



















1987 and 1990 -  
a double whammy ...





# Bringing things up-to-date...



## WINDSOR GREAT PARK



























## 'Celebrity' trees ...



















WILLIAM THE CONQUEROR'S OAK,  
WINDSOR FOREST.







For the future ...















CROWN ESTATE



